

Teamwork & strategies to reduce missed fractures

Dr Tracy O'Regan, Professional officer clinical imaging & research
Diagnostic Radiographer

TracyO@sor.org



Report 2: Missed fractures

Clinical negligence claims in
Emergency Departments in England



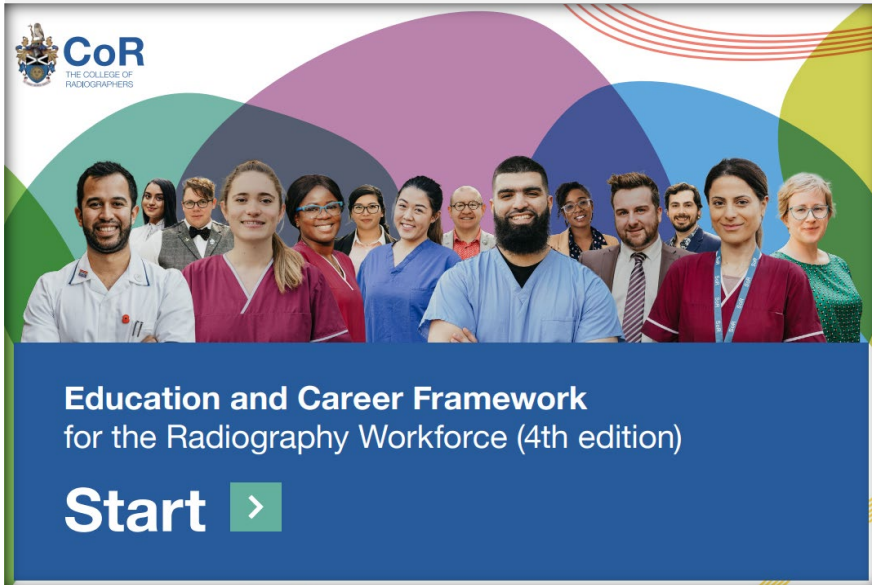
Report 2 of 3: Missed fractures



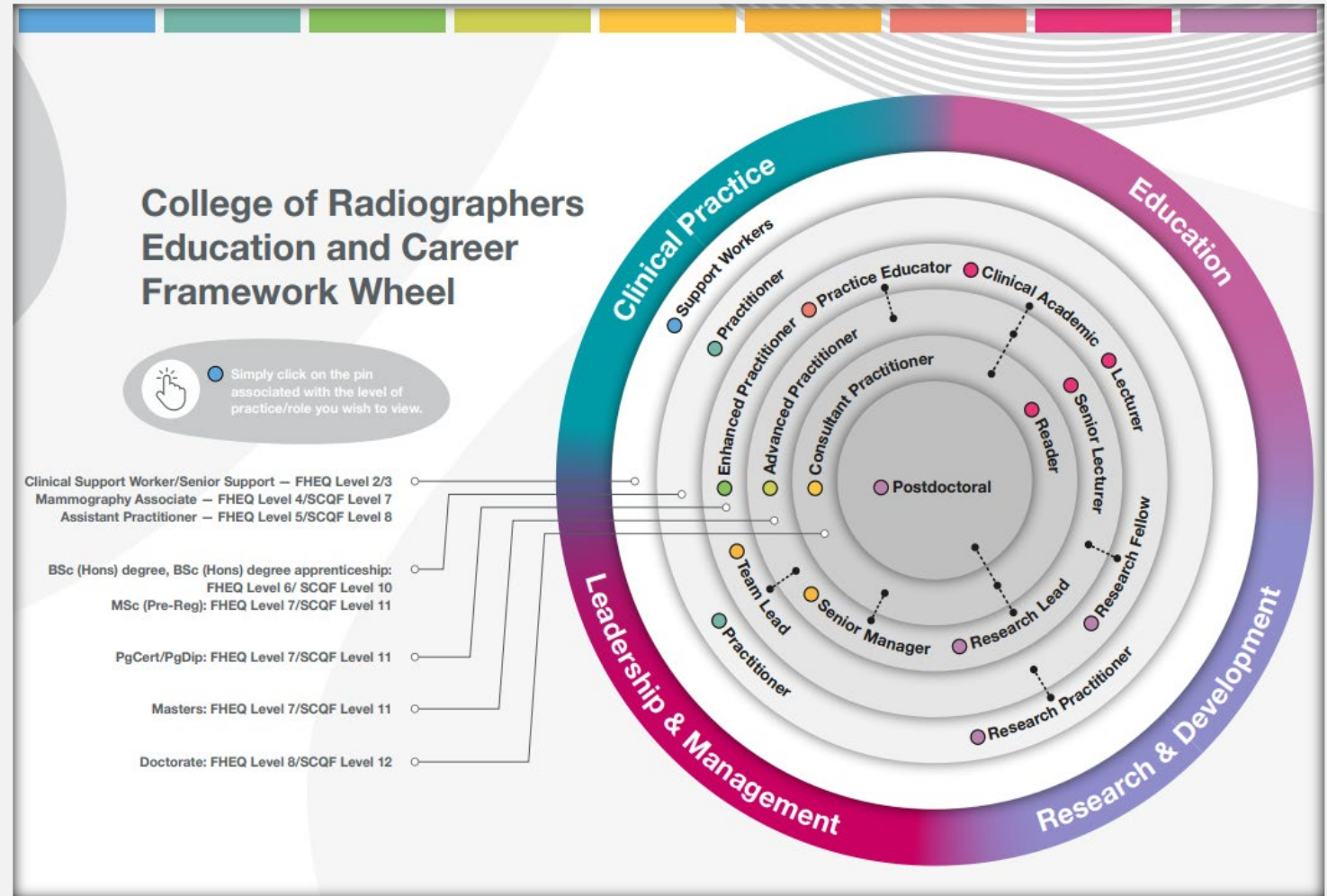
RECOMMENDATIONS:

- 1. Workforce:** The relevant Royal Colleges and professional bodies should continue to work together to develop and promote models that optimise use of the ED and imaging workforce to deliver accurate and timely fracture diagnosis. Providers should ensure that cross disciplinary training and supervision is provided.
- 2. Models of care:** This report supports the aims of NHS England and NHS Improvement in developing care models that provide accurate and timely diagnostic pathways and that address the high demand on emergency care and imaging services.
- 3. ED multi-disciplinary meetings:** The development of policy to support Emergency Medicine/radiology multi-disciplinary teams (MDTs), similar to those established within cancer care. NHS England and NHS Improvement should work collaboratively with the respective colleges in the development of consistent frameworks for MDTs and setting a national standard for their implementation within all EDs across England.
- 4. Training and competence:** Given the cross professional group that is required to carry out interpretation of x-rays in an emergency setting there will naturally be variation in levels of experience, competence and expertise. A national training qualification for interpretation of emergency x-rays that was available to ED staff, radiologists and radiographers would provide the opportunity for standardisation and reduce the risk of error.
- 5. Hip fractures:** The relevant Royal Colleges and professional bodies should continue to work together to prioritise accurate diagnosis of hip fractures, given the associated morbidity and mortality, the known risks for older people and the challenges in diagnosis of occult fractures. Providers must ensure that there is sufficient access to cross sectional imaging to support timely diagnosis for this patient group.

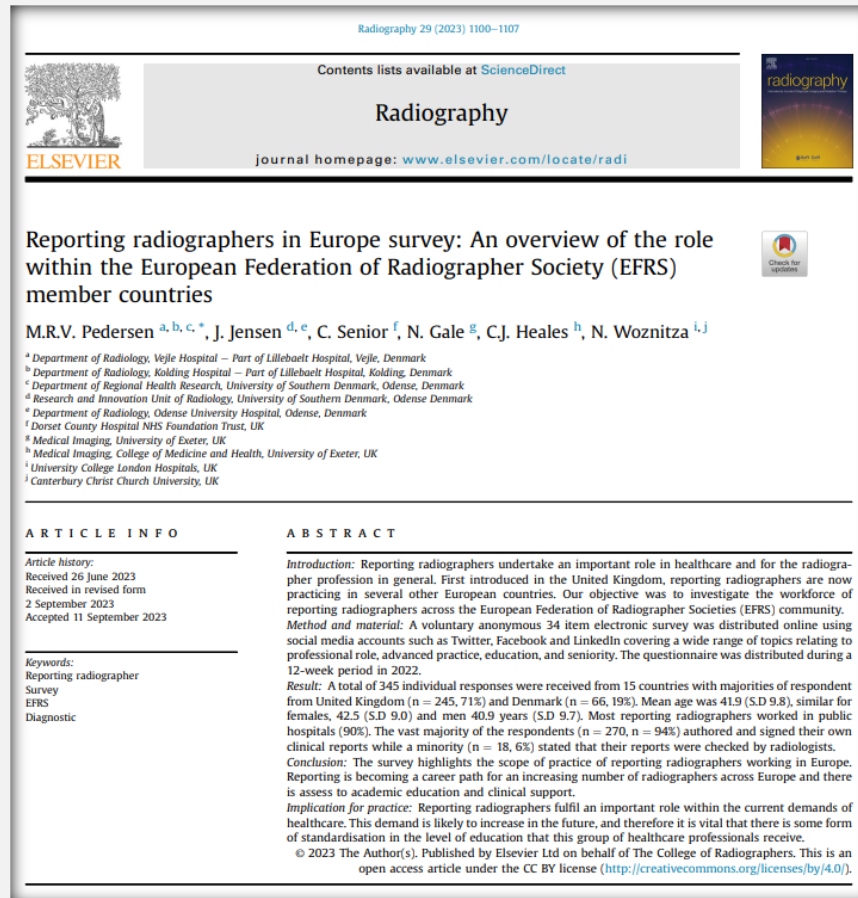
Recommendation 1: Optimise use of ED & Imaging workforce



[12604-CoR-ECF-Interactive-v9a \(sor.org\)](https://www.sor.org/12604-CoR-ECF-Interactive-v9a)



Recommendation 1: Optimise use of ED & Imaging workforce



| Country |
|----------------|
| Albania |
| Andorra |
| Belgium |
| Bulgaria |
| Denmark |
| Finland |
| France |
| Ireland |
| Malta |
| Netherlands |
| Norway |
| Portugal |
| Russia |
| Sweden |
| United Kingdom |



Recommendation 1: Optimise use of ED & Imaging workforce



Clinical Imaging Requests from Non-Medically Qualified Professionals

3rd edition

CLINICAL PROFESSIONAL RESOURCE



CLINICAL IMAGING REQUESTS FROM NON-MEDICALLY QUALIFIED PROFESSIONALS

Foreword

Royal College of Nursing

Nurses practice autonomously across a range of health and social care settings utilising their specialist skills and competencies at varying levels such as advanced level practice and consultants. They deliver the right skills, in the right place, at the right time to provide optimal patient-centred care. National policy has supported these developments, but local variations in provision have prevented nurses from fulfilling their true potential.

The Royal College of Nursing (RCN) has welcomed the opportunity to lead on the collaborative development of this guidance for non-medical registered professionals in collaboration with the Society and College of Radiographers.

Working with the key professional organisations listed below, we have produced guidance that informs employers and health care professionals regarding requests for clinical imaging from nurses and other non-medical health care professionals.

We hope that nurses will take the opportunity to use this guidance fully in their area/organisation and so optimise another aspect of clinical practice to benefit their patients.

Dame Donna Kinnair, Chief Executive & General Secretary, Royal College of Nursing

Society and College of Radiographers

Health care in the UK is characterized by excellent inter-disciplinary working and collaboration by health professionals. The provision of services to the public, particularly in a context of unprecedented demand and severely limited resource, depends on professionals constantly reviewing and exploring how their work together can improve quality and efficiency.

This updated guidance informs and enables better inter-professional collaboration so that diagnostic imaging referrals can be appropriate, timely and safely made.

Richard Evans, Chief Executive Officer, Society and College of Radiographers

Royal College of Radiologists

The Royal College of Radiologists (RCR) welcomes this cross-professional guidance, and supports the emphasis on autonomy of non-medically qualified referrers, recognising the role of referrers in the ongoing management of the patient. The RCR is pleased to support this updated guidance, which we hope will continue to enhance the safety and delivery of patient services.

Prof Mark Callaway, Medical Director, Professional Practice, Faculty of Clinical Radiology, Royal College of Radiologists



IR(ME)R
Implications for clinical practice in diagnostic imaging, interventional radiology and diagnostic nuclear medicine

Radiographer Enhanced, Advanced and Consultant Practice

The Richards Review (2020) and the Long Term Plan (2019) have signalled a need for significant expansion in imaging services, this is exacerbated by the COVID recovery work. Radiography is a major part of this expansion and remains a priority workstream for 22/23.

[Radiographer Enhanced, Advanced and Consultant Practice | Health Education England \(hee.nhs.uk\)](https://www.hee.nhs.uk)

2022/23 reporting radiographer offer

HEE is offering NHS Trusts a support package consisting of course fee, clinical supervision and training grant per student:

- Course: SCoR approved, M-level programme - e.g. PgCert.
- Supervision: education mentorship, coaching & supervision and provision of protected learning spaces.
- Grant: to support and enable Trusts to release trainees.

Support to be used by employers to support and facilitate trainees completing programmes (at agreed national standards).

HEE working with NHS Trusts and radiography and radiology organisations to continuously improve roll-out.

You can email us at: diagnosticsprogramme@hee.nhs.uk to find out more about this programme.

[Reporting radiographers | Health Education England \(hee.nhs.uk\)](https://www.hee.nhs.uk)

Current and Future Roles of Diagnostic Radiographers

December 2021
ISBN: 978-1-909802-70-4



207 Providence Square
Mill Street, London
SE1 2EW, UK

020 7740 7200
info@sor.org

www.sor.org



[Current-and-Future-Roles-of-Diagnostic-Radiographers-v1 \(sor.org\)](https://www.sor.org)

Multi-professional framework for advanced clinical practice in England



Consultant Radiographer

Guidance for the Support of New and Established Roles

ISBN: 978-1-909802-75-9
September 2022 | Second Edition



207 Providence Square
Mill Street, London
SE1 2EW, UK
020 7740 7200
info@sor.org

www.sor.org



SOCIETY OF
RADIOGRAPHERS
TRAINEE CONSULTANT
AND CONSULTANT
RADIOGRAPHER SURVEY
RESULTS 2020

ISBN: 978-1-909802-64-3

Quartz House
207 Providence Square
Mill Street
London SE1 2EW
020 7740 7200
info@sor.org

www.sor.org

SoR Consultant Radiographer Network (2023)

196 of 32,000 SoR Member Diagnostic & Therapeutic Radiographers are employed at Consultant AHP Level (approximately 0.6%)

Clinical Practice:

Number:

Diagnostic Breast Imaging

88

Ultrasound

20

ED/MSK Trauma (0.06%)

21

Gastrointestinal

7

Magnetic Resonance Imaging

3

Radiotherapy/Oncology

41

Forensics / Postmortem

1

Computerised Tomography

2

Brachytherapy

1

Palliative radiotherapy

12

Number of reporting radiographers?

Recommendation: Multi-professional training & competence

Regional Imaging Training Academies

South East Imaging
Training Academy ▶

South West Imaging
Training Academy ▶

North East and
Yorkshire Training
Imaging Academy ▶

North West Imaging
Training Academy ▶

East of England
Imaging Training
Academy ▶

Midlands Imaging
Training Academy ▶

London Imaging
Training Academy ▶

[Practice Educators | Health
Education England
\(hee.nhs.uk\)](https://www.hee.nhs.uk/practice-educators)

[Imaging Training Academies | Health Education England \(hee.nhs.uk\)](https://www.hee.nhs.uk/imaging-training-academies)

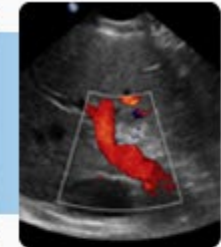
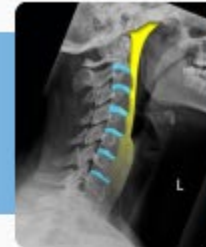
- Practice Educator
- Placement learning tutor
- Clinical Educator
- Training Co-ordinator
- Clinical lecturer
- Student Co-ordinator
- Clinical Tutor
- Appraiser
- Mentor

Recommendation: Multi-professional training & competence

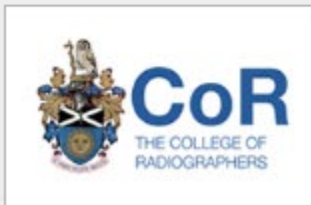


Clinical Imaging

Interpretation of Radiological Images



This programme is in partnership with...



[Clinical Imaging - elearning for healthcare \(e-lfh.org.uk\)](http://e-lfh.org.uk)

Recommendation: Multi-professional training & competence

R-ITI

Radiology – Integrated Training Initiative

An award winning, ground breaking e-learning resource that supports and enhances the training of radiologists

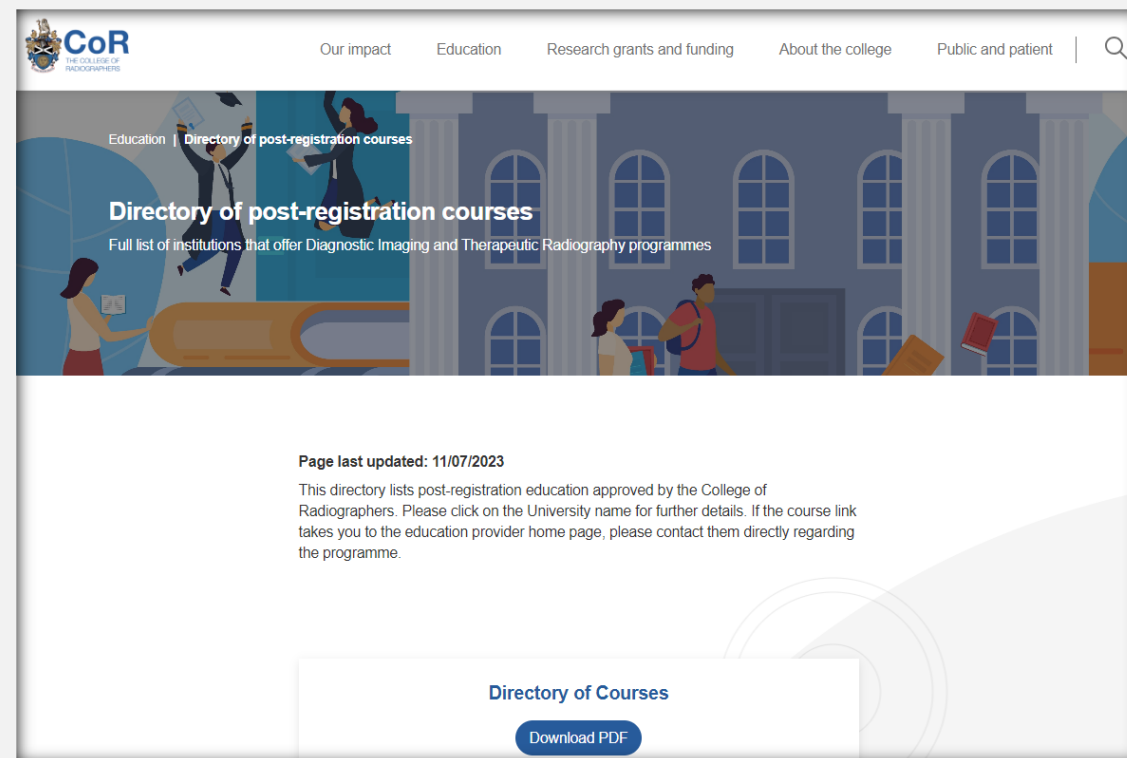
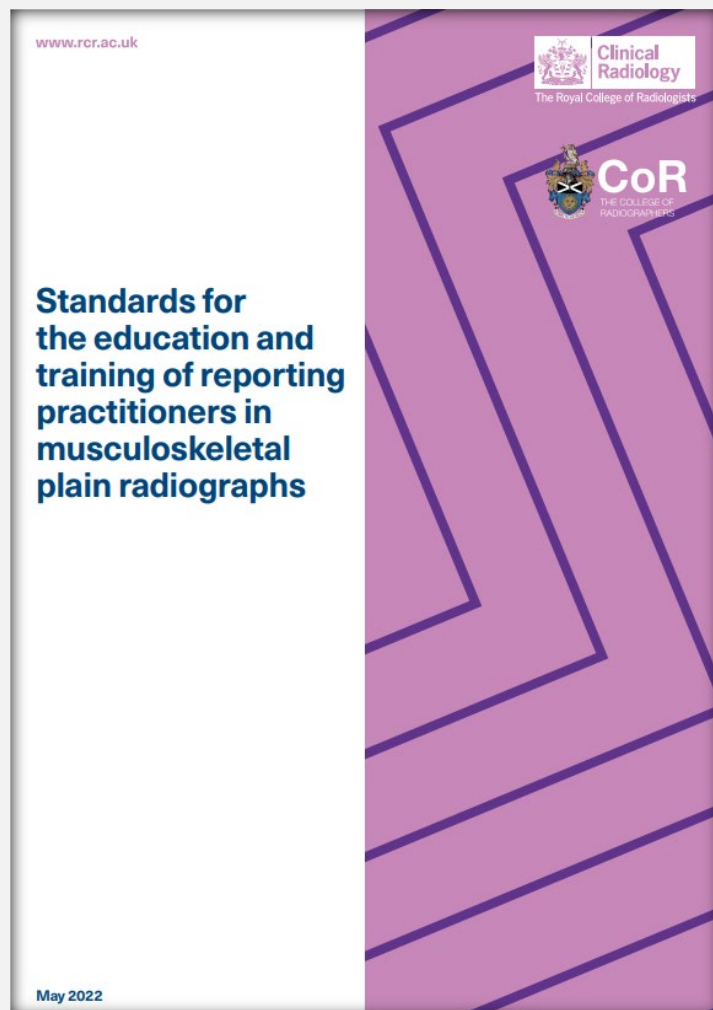


This programme is in partnership with...



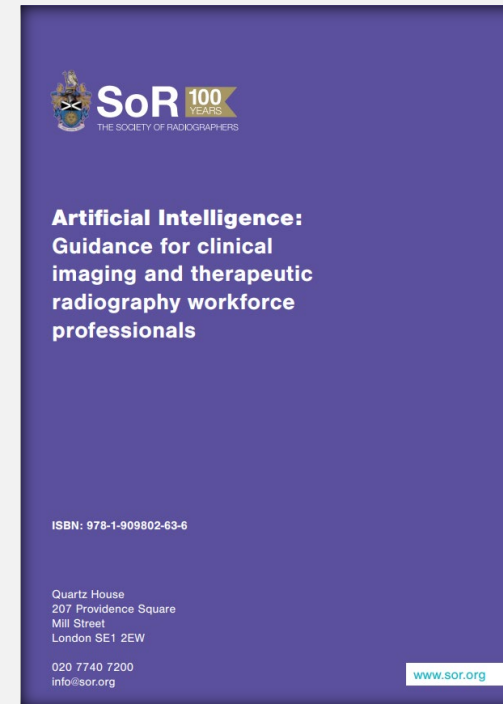
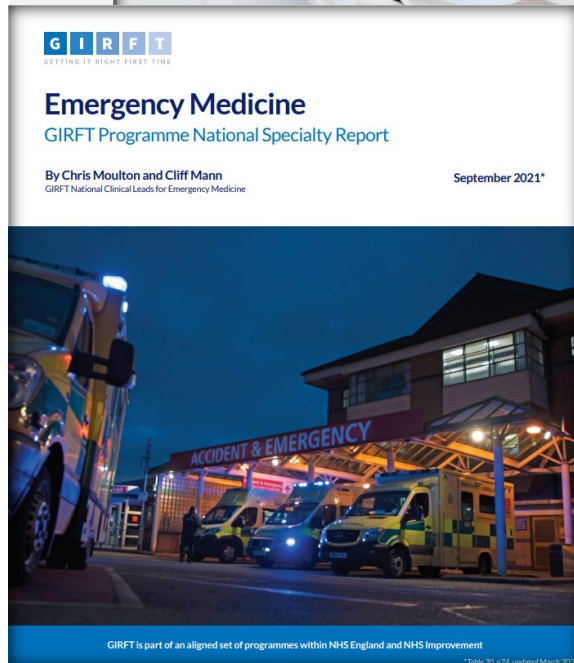
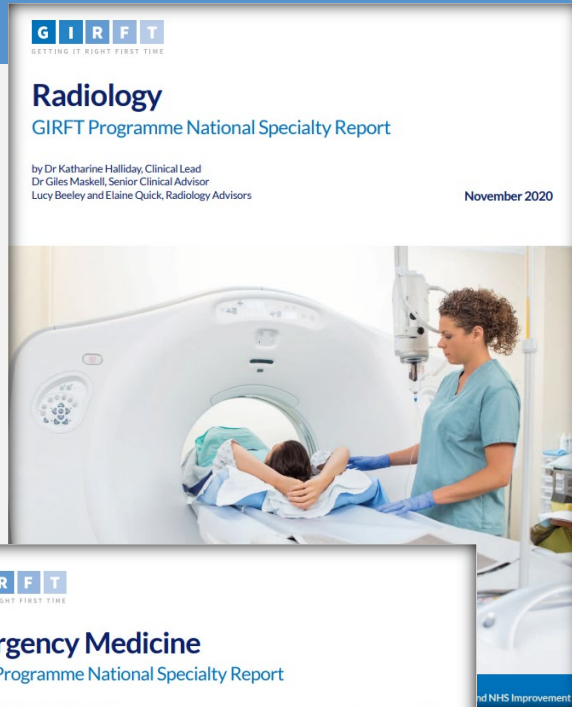
[Radiology - elearning for healthcare \(e-lfh.org.uk\)](http://e-lfh.org.uk)

Recommendation: Multi-professional training & competence



[Directory of post-registration courses | CoR
\(collegeofradiographers.ac.uk\)](https://collegeofradiographers.ac.uk)

Recommendation: developing care models



**24hr definitive report
(hot reporting)**

Radiographer discharge

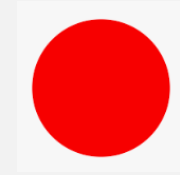
Virtual fracture clinic

DXA services

Fracture liaison clinic

Preliminary Clinical Evaluation (PCE)

Development of red dot: interim PCE safety net services



2023 - Update to this outdated document:

Preliminary Clinical Evaluation and Clinical Reporting by Radiographers: Policy and Practice Guidance

Responsible person: Tracy O'Regan
Published: Monday, February 11, 2013
ISBN: 978-1-906225-36-0

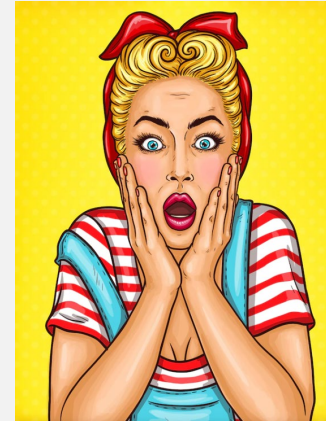


Image by
vectorpocket
on Freepix

SoR 2023/2024 workplan

Publish update to SoR guidance for radiographers:
preliminary clinical evaluation

CPD Focus on Hip fractures older people

SoR document - Developing a local research
strategy for your clinical imaging department –
service evaluation

Support to develop business case templates –
24hr definitive clinical diagnosis/alternative
models of care/use of technology

TracyO@sor.org



Safe services:

- ✓ Optimise use of workforce
- ✓ Providers ensure cross-disciplinary training & supervision
- ✓ Accurate & timely diagnostic pathways
- ✓ National training qualification available for ED & Imaging Staff